

OPTIMAX[®] Dual-Stage Precleaner Installation Kit for Komatsu WA500-7 Wheel Loader – High Heat/Standard/Landfill

Sy-Klone part number: IN0069 High Heat/Standard,
IN0075 Landfill

Purpose:

The OPTIMAX[®] Dual-Stage Precleaner ejects the majority of particles through the ejection slot in the first stage of the system. Remaining fine particulate is exhausted through the scavenger connection in the second phase of precleaning. This unit has been designed to perform well in extreme debris conditions such as landfill environments, providing dramatically extended filter life. While routine cleaning and maintenance is not required, it is recommended that you perform periodic inspections to ensure the ejection slot does not become blocked. **See the Video Library on www.sy-klone.com for a demonstration.**

REMOVE INTAKE ASSEMBLY:

1. Loosen upper worm gear clamp on intake hump hose.
2. Remove the four bolts and washers securing the intake tube and retain.
3. Remove the intake tube.
4. Loosen lower worm gear clamp on intake hump hose.
5. Remove hump hose.



REMOVE EXHAUST TIP:

1. Remove the seven bolts and washers securing the exhaust tip and retain.
2. Remove the exhaust tip.



Replacement Parts:

Stock code	Description	Quantity
9002R	6-INCH SY-KLONE PRECLEANER	1
66090	6-INCH TO 7-INCH EXPANSION ADAPTER	1
KT0009	DVC KIT	1
7H6	7-INCH TO 6-INCH HUMP HOSE	1
AD0081	OPTIMAX BRACKET ASSEMBLY	1
AD0091	DUST EJECTOR WA500-7	1
HEATSHD-001	THERMO SLEEVE	20 INCHES
FH20-001	2-INCH EXHAUST HOSE	18 INCHES
OA09007	CHECK VALVE SILVER	1
S200X250	2 INCH I.D. STRAIGHT SLEEVE	1
9002SC (IN0075)	LANDFILL SCREEN 9002	1

Also included in kit:

Description	Quantity
3.88-INCH T-BOLT CLAMP	1
4.88-INCH T-BOLT CLAMP	1
5.88-INCH T-BOLT CLAMP (IN0075)	1
6-INCH T-BOLT CLAMP	1
3-INCH WORM GEAR CLAMP	4
6.75-INCH WORM GEAR CLAMP	1
7.50-INCH WORM GEAR CLAMP	1
7-INCH TO 6-INCH HUMP HOSE	1
M10 WASHER	12
M10 X 1.5 X 25 BOLT	12
M10 LOCK WASHER	12
6-INCH OD BY 6.5-INCH EXTENSION PIPE (IN0075)	1
#10X3/4 SELF-TAPPING SCREW (IN0075)	6

Installation Time: 1 to 2 hours



IN0069

OPTIMAX DUAL-STAGE PRECLEANER

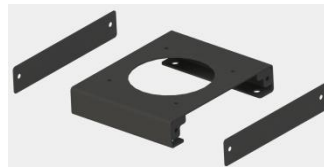


IN0075

OPTIMAX DUAL-STAGE PRECLEANER



7H6 Hump Hose



AD0081 – OPTIMAX BRACKET



AD0091 EXHAUST SCAVENGER

OPTIMAX® Dual-Stage Precleaner Installation Kit for Komatsu WA500-7 Wheel Loader – High Heat/Standard/Landfill

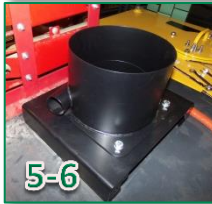
EXHAUST SCAVENGER INSTALLATION:

1. Install AD0091 exhaust scavenger over muffler with hardware retained from exhaust tip removal. **Note:** Orient the exhaust scavenger to vent exhaust gases towards rear of machine.



OPTIMAX DUAL-STAGE INSTALLATION:

1. Place a 7.5-inch clamp over 7-inch end of 7H6 hump hose. Leave loose.
2. Install 7H6 assembly on filter housing 7-inch inlet.
3. Place a 6.75-inch clamp over 6-inch end of 7H6 hump hose. Leave loose.
4. Install AD0081 bracket with hardware retained from intake tube removal.
5. Install OPTIMAX can 6-inch outlet into 7H6 hump hose.
6. Rotate OPTIMAX ejection port towards exhaust scavenger. Align OPTIMAX can bolt pattern to match AD0081 bracket pattern.
7. Secure OPTICAN base to AD0081 bracket with four M10 bolts, washers, and lock washers.
8. Secure 7H6 hump hose to OPTICAN and air filter inlet with installed 6.5-inch clamps.
9. Install side covers on AD0081 bracket with two M10 bolts, washers, and lock washers each.
10. Install upper precleaner assembly on OPTICAN. **Note:** The IN0075 installation will include a landfill screen.
11. Align precleaner ejection slot towards rear of machine. Secure assembly with installed clamps.



12. Install S200x250 sleeve on OPTIMAX can outlet. Secure with one 3-inch clamp.
13. Place second 3-inch clamp on S200X250, leave loose.
14. Install OA09007 check valve into S200X250 sleeve in the proper orientation. Secure with 3-inch clamp. **Note:** The top and air flow direction is indicated on the check valve body. Air flow will travel from the OPTIMAX ejection port to the exhaust scavenger port.
15. Insert 2-inch flex hose into thermo sleeve. **Note:** The thermo sleeve can be added to all applications but is not necessary for non-high heat installs.
16. Install 2-inch flex hose with thermo sleeve on exhaust scavenger port. Secure with one 3-inch clamp.
17. Place a second 3-inch clamp on 2-inch flex hose and leave loose.
18. Connect check valve and 2-inch flex hose. Secure with 3-inch clamp.



OPTIMAX® Dual-Stage Precleaner Installation is complete for the WA500-7 Wheel Loader.

Please replace the primary and safety filters before operation.

While routine cleaning and maintenance is not required, it is recommended that you perform inspections every 1000 hours. Remove the precleaner and extension pipe. Verify precleaner rotor spins and there is no debris or build up in the second stage.

Technical Support

www.sy-klone.com
support@sy-klone.com
(904) 448-6563 ext. 1310