

OPTIMAX[®] INSTALLATION KIT FOR KOMATSU PC200LC-8 EXCAVATOR

Sy-Klone kit part number:
IN0052

For model numbers:

- PC200LC-8

Installation time: 3 hours

Before Installation:

Review the complete installation instructions and evaluate the following items:

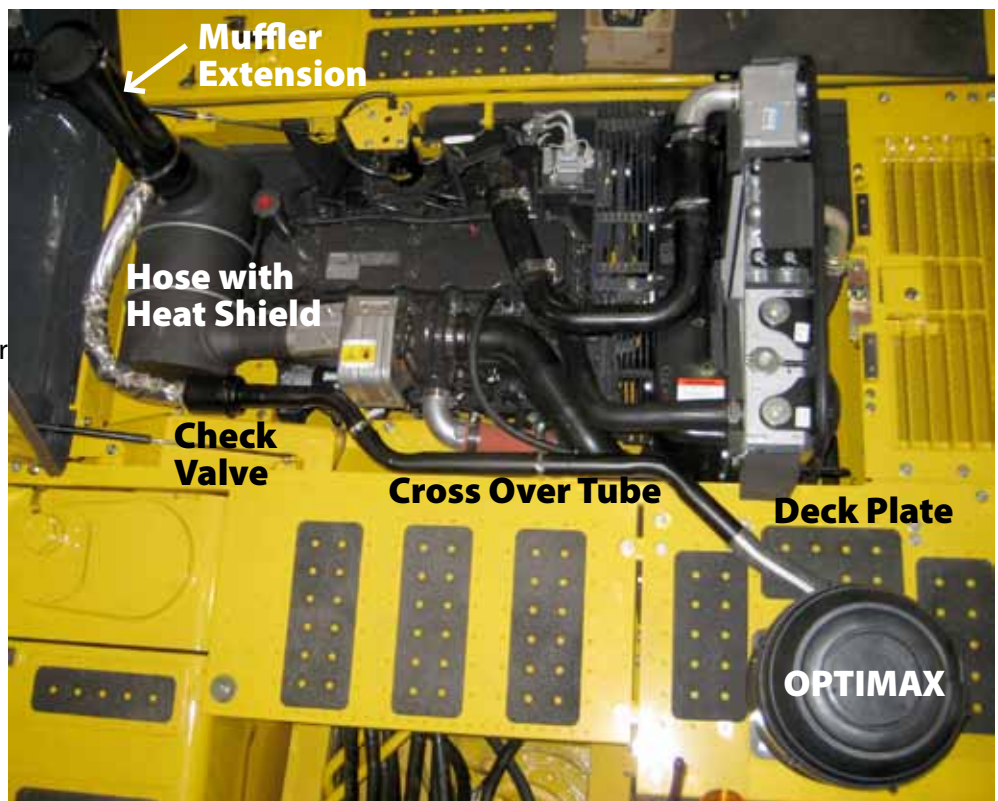
- Where is the AC condensor core located? Will it have to be discharged and moved to be able to remove and install the new deck plate provided in the kit?
- Are there any other obstructions or concerns related to the installation of the new deck plate, i.e. hoses, wires, etc.?
- Open the engine compartment and locate the mounting locations for the 2 inch cross over tube brackets to insure there are no conflicts.
- Inspect the muffler. The muffler must be in good condition.
- Check the contents of the box to verify that all parts are included.

Technical Support:

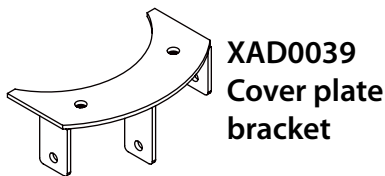
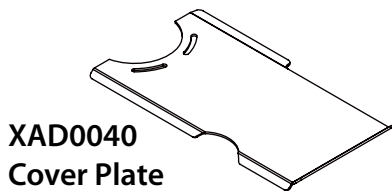
Web: www.sy-klone.com

Email: support@sy-klone.com

Phone: +1 904-448-6563 ext. 1310



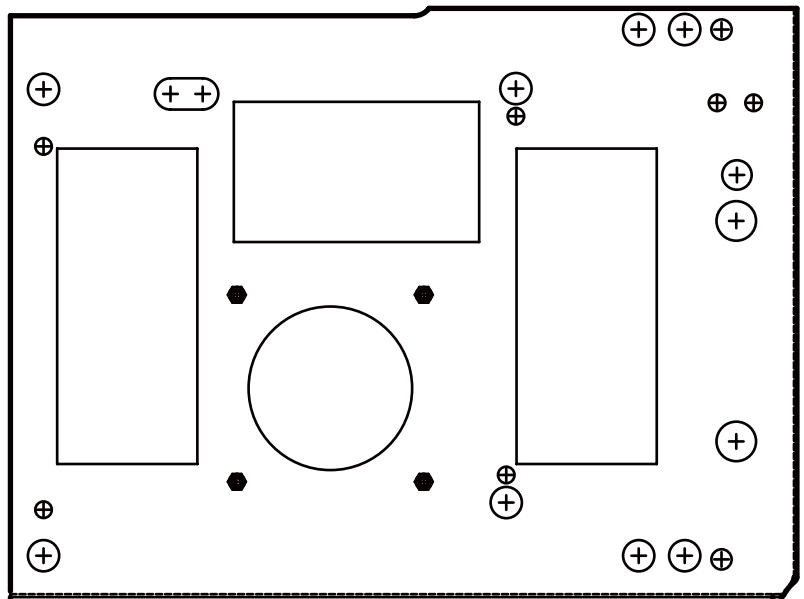
Parts included in Kit



NOT PICTURED:

- XHEATSHD Thermo Sleeve (30 inches)
- Edge Molding (60 inches)

XAD0034 OPTIMAX Deck Plate

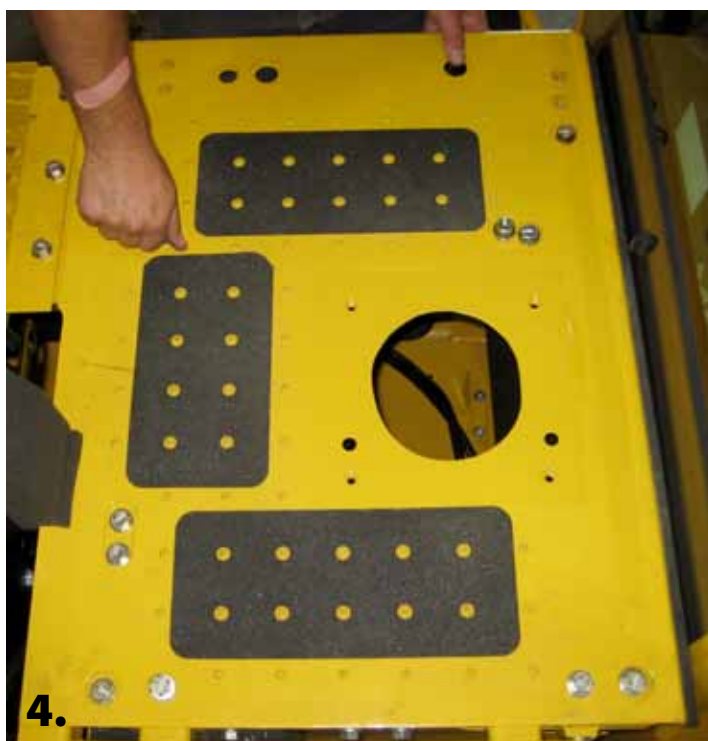


Installation Instructions

1. Open the engine cover.
2. Remove the deck plate that covers the engine air filter housing. This may require moving the AC condenser core or other obstacles.
3. Loosen the clamp that secures the engine air filter housing outlet to the turbo inlet ducting to allow the housing to be rotated. Loosen the clamps that secure the engine air filter housing. After the installation of the OPTIMAX System the clamps will be tightened.



4. Install the new deck plate (XAD0034).



5. Rotate the engine air filter housing inlet so that it is in alignment with the OPTIMAX hole in the deck plate. The hose connecting the outlet of the OPTIMAX and inlet of the engine air filter housing will have a bend in it. Keep the bend radius as short as possible.

6. Insert the rubber reducing insert (60R50) into one end of the hose.



7. Attach the Inlet hose (XFH60-0015) to the OPTIMAX outlet and clamp (91675W).



Installation Instructions, continued

8. Mount the OPTIMAX System (9502LF-014) with hose attached to deck plate (XAD0034) with the ejection scavenger port pointed to the back of the machine. Use bolts and washers supplied.
9. Attach the hose (XFH60-0015) from the OPTIMAX outlet to the engine air filter housing inlet and tighten clamp (91675W).



12. Remove the Evacuator Valve from the engine air filter housing cover and replace with Dump Valve Cover (DVC) and wire tie.



10. Tighten the clamp that secures the engine air filter housing outlet to the turbo inlet ducting.



11. Tighten the clamps that secure the engine air filter housing.



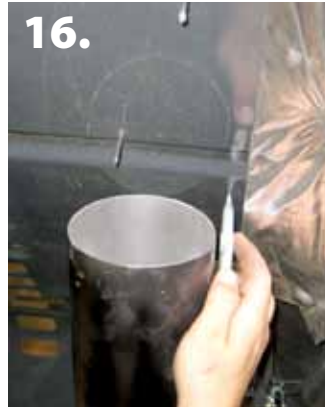
13. Cut exhaust pipe 2 inches above weld.
14. Install exhaust scavenger muffler extension (XAD0037). Make sure that the scavenger tube on the side of the exhaust scavenger muffler extension is aligned to the hinge side of the muffler.



Installation Instructions, continued

15. Remove insulation from the engine cover where the new exhaust scavenger muffler extension contacts the insulation.

16. Close the engine cover until the cove contacts the exhaust scavenge muffler extension. Mark the engine cover and prepare to cut the engine cover to allow the engine cove to close.



17. Cut the engine cover. Cover engine with welding blanket before cutting the engine cover. It is best to cut the opening small and then increase the opening to the correct size.



18. If the exhaust scavenge muffler extension has a flapper cover or rain cap, install it now. The cap may differ from that pictured. Check the clearance between the exhaust and the engine cover.

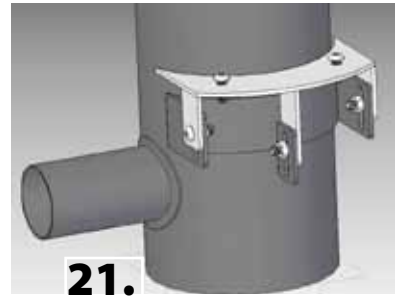


19. After cutting the opening in the engine cover install the edging supplied in the kit.

20. Close the engine cover and check clearance and that the cover will completely close. If it does not make appropriate corrections.

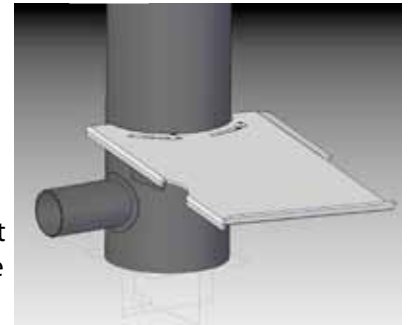


21. Install the cover plate bracket and cover plate on the exhaust scavenger muffler extension using the supplied M6 bolts and lock washers.



22. Close engine cover and check for proper alignment. Make adjustments as needed.

23. The insulation removed during step 19 will need to be cut down to accommodate new opening and reinstalled.



24. Locate the long (XAD0036) and short (XAD0035) cross over tube mounting brackets.

25. Install the short cross over mounting tube bracket.



26. Install the long cross over tube bracket.

27. Open the engine cover and install the scavenger hose (FH20-001), attaching it with clamps (91200) to the long and short brackets.



Installation Instructions, continued

28. Measure and cut scavenger hose (FH20-001) to fit between the OPTIMAX scavenger port and the cross over tube.



29. Connect the OPTIMAX and Cross over tube with scavenger hose (FH20-001) and clamp (91200).

30. Measure the scavenger hose (FH20-001) from the exhaust scavenger port to the check valve end of the crossover tube (X20052) and cut if necessary.

31. Cover the hose with heat shield (XHEATSHD). The heat shield should be cut approximately 3 inches longer than the hose so that the ends of the heat shield can be rolled back inside itself approximately 1.5 inches at each end. The heat shield should cover the entire length of the hose and under the clamps (91200).



32. Connect the exhaust scavenger to the Cross over tube at the check valve with the heat shield covered cross over hose.



33. Close the engine cover and mark where cross over tube and the engine cover contact. The engine cover will need to be cut so that it will latch.



34. Cut the engine cover where the cross over tube and engine cover contact.



35. Cover the cut edge with the edging supplied.

36. Review installation and double check all clamps and bolts to insure proper installation.