



OPTIMAX[®] Dual-Stage Precleaner Installation Kit for Caterpillar 16M Motor Grader with Metal Filter Housing

Sy-Klone part number: IN0066

Purpose:

The OPTIMAX[®] Dual-Stage Precleaner ejects the majority of particles through the ejection slot in the first stage of the system. Remaining fine particulate is exhausted through the scavenger connection in the second phase of precleaning. This unit has been designed to perform well in extreme debris conditions such as landfill environments, providing dramatically extended filter life. While routine cleaning and maintenance is not required, it is recommended that you perform periodic inspections to ensure the ejection slot does not become blocked. See the Video Library on www.sy-klone.com for a demonstration.

PRIOR TO INSTALLING OPTIMAX:

- The Optimax Dual-Stage Precleaner should always be installed with the machine turned off.
- If the machine already has the scavenging system equipped, verify suction coming from the system. You can use a rag or piece of paper to verify suction. Do not let go of the rag. If there is no suction the muffler scavenger is clogged or the muffler needs to be replaced.

Caution: If the muffler needs to be replaced stop installation and recover, plug or reconnect the scavenger tube. Tell the customer of the problem. Finish installation after the muffler is corrected.

Check suction with a rag or piece of paper.



7H6 Hump Hose



60065 Extension Pipe



OA09007 Check Valve

9003 Precleaner

68011 Expansion Adapter

STD7OPTIBS2



KT0009

Parts included in kit:

| Stock code | Description | Quantity |
|-------------|-----------------------------|----------|
| STD7OPTIBS2 | OPTIMAX 2ND STG CHMBR ALT 7 | 1 |
| OA11002 | 2" FLANGE ADAPTER | 1 |
| OA09011 | 2" P-CLAMP | 6 |
| OA09007 | CHECK VALVE SILVER | 1 |
| OA09005 | HOSE, EXHAUST - 2.0" ID | 10 ft |
| XHW0066 | BOLT 3/8-16 x 1 1/4 | 4 |
| XD51 | #12 X 1 HW SELF DRILL ZINC | 4 |
| XD18 | 3/8" NYLON LOCK NUT | 4 |
| 7H6 | HUMP HOSE 7" TO 6" | 1 |
| 68011 | EXPANSION W/O CLAMP | 1 |
| 600065 | EXTENSION CUT TO 6.5 INCH | 1 |
| KT0009 | DVC KIT | 1 |
| 91750W | CLAMP WORMGEAR 7.50 IN | 1 |
| 91675W | CLAMP WORMGEAR 6.75 IN | 1 |
| 91588 | CLAMP T-BOLT 5.88 IN | 1 |
| 91488 | CLAMP T-BOLT 4.88 IN | 1 |
| 91388 | CLAMP T-BOLT 3.88 IN | 2 |
| 91300 | CLAMP WORMGEAR 3.00 IN | 6 |
| 9003 | 8" SY-KLONE PRECLEANER | 1 |
| XD58 | 3/8" FLAT WASHER | 8 |

Technical Support

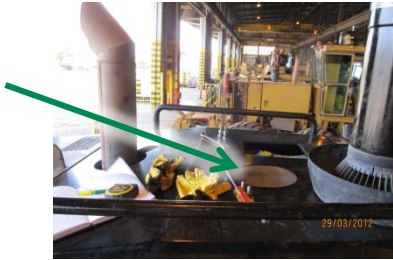
www.sy-klone.com
support@sy-klone.com
 (904) 448-6563 ext. 1310

OPTIMAX Dual-Stage Precleaner Installation Kit for Caterpillar 16M Motor Grader with Metal Filter Housing

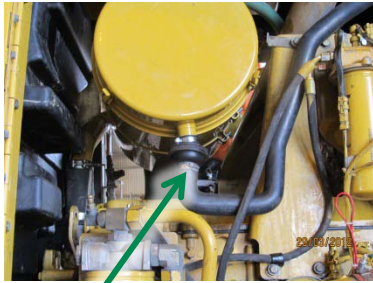
OPTIMAX INSTALLATION:

1. Remove existing precleaner or rain cap.

Remove Rain Cap and Pipe.



2. Check the restriction gauge by running the machine at high idle; record the results on a data sheet.
3. Shut machine down and turn off master power switch.
4. Remove the scavenger pipe from the filter housing and use a cap from the KT0009 kit to cap the filter housing scavenger port and secure with tie.



Scavenger Port

Cap



5. Mount the Optimax Assembly to the deck around the existing air intake hole in the rear deck with the provided hardware. Underneath the deck, clamp the 60065 extension pipe to the filter housing, then clamp the 6H6 hump hose to the pipe and then clamp it to the six inch outlet on the Optimax can.



Mount to Optimax Assembly to rear deck



60065 Extension Pipe and 6H6 Hump Hose

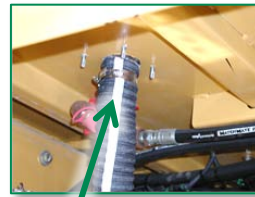
6. Cut a 2-inch hole in the hood near the ejection port of the Optimax assembly as shown below. Mount the OA11002 pipe adapter to the hood using the provided self-tapping screws.



Cut Hole between the Optimax Assembly and Muffler

OA11002

7. Install a portion of the 2-inch exhaust hose from the ejection port of the Optimax to the OA11002 pipe adapter; use the provided hose clamps to secure the hose.
8. Underneath the deck, install another portion of the hose to one end of OA11002 adapter and the other end to the check valve. Clamp the exhaust hose to the check valve, then plumb the hose to the evacuator port on muffler or to the existing evacuator line. (Note: the check valve has the airflow arrow etched on the part to aide in installation.)

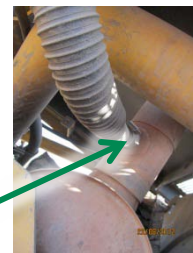


Clamp Exhaust Hose



Check Valve

Evacuator Port on Muffler



9. Please replace the primary and safety filters before operation.

OPTIMAX® Installation is complete for the Caterpillar 16M Motor Grader with metal filter housing.