

Series 9000 Precleaner Installation Kit for Kenworth T800 with Cummins ISX, N14, Caterpillar C15 and Detroit diesel S60 engines.

Sy-Klone part numbers: IN0074



Purpose:

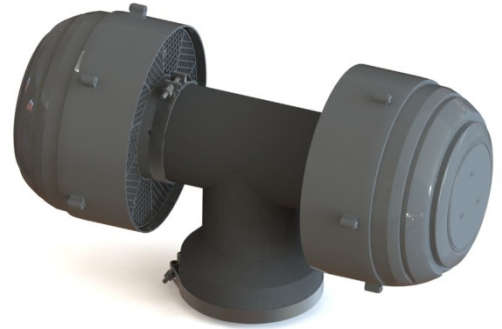
Air filter life is directly related to the amount of debris ingested through an engines air intake. Installing a Sy-Klone Series 9000 Air Precleaner as the first stage of an air intake system prevents the majority of heavier-than-air particles from entering the system. This results in longer air filter life, more efficient engine performance and decreased maintenance expenses. While routine cleaning and maintenance is not required, it is recommended that you perform periodic inspections to ensure the ejection slot does not become blocked. **See the Video Library on www.sy-klone.com for a demonstration.**

NOTE:

The Sy-Klone Precleaner should always be installed with the machine turned off.

Parts included in kit:

Stock code	Description	Quantity
9005	5 INCH SY-KLONE PRECLEANER	2
91525	CLAMP T-BOLT 5.25 IN	2
91688	CLAMP T-BOLT 6.88 IN	1
AD0104	9005 DUAL T-ADAPTER	1



Technical Support

www.sy-klone.com
support@sy-klone.com
(904) 448-6563 ext. 1310



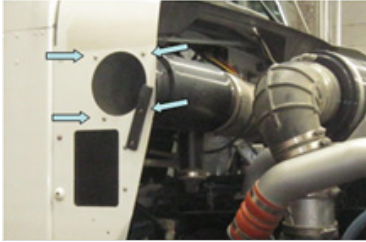
Series 9000 Precleaner Installation Kit for Kenworth T800 with Cummins ISX, N14, Caterpillar C15 and Detroit diesel S60 engines.

PRECLEANER INSTALLATION:

1. Shut machine down and turn off master power switch.
2. Remove clamps off the original left side piping of the filter housing.



3. Remove the four screws as shown to remove the aluminum flange. Note: Please leave the mesh in place.



4. Remove the inlet piping and filter housing from the truck.



5. Clean the filter housing and inspect it for cracks, rusting or any other signs of damage. If you find any sign of damage replace the filter housing.



6. On the floor, clamp the AD0104 T-Adapter on the housing without the precleaners.
7. Reinstall the housing in its original orientation, make sure to leave enough room between the "T" adapter and the valve cover.



8. Tighten all the clamps to specification.
9. Install the precleaners, verify that they don't touch any of the wiring or the brake lines.



10. Make sure the ejections ports of the precleaners are facing down.



11. Install a new air filter and only change it when the filter minder reaches 25 in-H2O.