

Universal Mounting Kit for the Series 9000 Precleaner

Universal Mounting Kit Number	PN:	KT0003	PN:	KT0004	PN:	KT0005	PN:	KT0006	PN:	KT0008
For use with Precleaner Model	PN:	9000R	PN:	9001/9001R	PN:	9005	PN:	9002 / 9002R	PN:	9003 / 9004
Precleaner Outlet Diameter	Size	3"	Size	4"	Size	5"	Size	6"	Size	8"
DESCRIPTION	QTY	Parts Included :	QTY	Parts Included :	QTY	Parts Included :	QTY	Parts Included :	QTY	Parts Included :
Universal Flange Adaptor	1	AD0021	1	AD0022	1	AD0023	1	AD0024	1	AD0025
Universal Backing Flange	1	AD0021-F	1	AD0022-F	1	AD0023-F	1	AD0024-F	1	AD0025-F
3/8" 16 X1.25 Bolts	3	9B-7237	3	9B-7237	4	9B-7237	4	9B-7237	4	9B-7237
3/8" Flat Washers	6	5P-1075	6	5P-1075	8	5P-1075	8	5P-1075	8	5P-1075
3/8" 16 Lock Nut	3	D18	3	D18	4	D18	4	D18	4	D18
#12 X 1 Zinc Self Drilling Screws	3	D51	3	D51						
5' Flex Hose	1	FH30-0060 (3 in diameter)	1	FH40-0060 (4 in diameter)	1	FH50-0060 (5 in diameter)	1	FH60-0060 (6 in diameter)	1	FH80-0060 (8 in diameter)
Hose Clamp	4	91300W	4	91475W	4	91500W	4	91675W	4	91800W
Metal Expansion Adaptor	1		1	64050 (4 in to 5 in)	1	65060 (5 in to 6 in)	1	66070 (6 in to 7 in)		
Adaptor Clamp	1	91388 (4 in)	1	91488 (5 in)	1	91588 (6 in)	1	91688 (7 in)		
1.25" DVP Plug	1	DVP-39125								
1.5" DVP Plug	1	DVP-3915	1	DVP3915	1	DVP-3915	1	DVP-3915		
2" DVP Plug			1	DVP3920	1	DVP-3920	1	DVP-3920	1	DVP-3920
3" DVP Plug							1	DVP-3930	1	DVP-3930
Rubber Reducing Insert	1	30R20 (3 in to 2 in)		40R30 (4 in to 3 in)	1	50R40 (5 in to 4 in)	1	60R50 (6 in to 5 in)	1	80R70 (8 in to 7 in)
Installation Instructions	1	LIT045	1	LIT045	1	LIT045	1	LIT045	1	LIT045

Installation Instructions:

1. Check content of box to insure all parts are included.
2. Check engine compartment to ensure the air filter housing can be rotated to point inlet toward the location of the flange adaptor.
3. Layout the installation, starting where the Flange Adaptor will be mounted. **The hose connecting the air filter housing and the Universal Flange Adaptor must be no longer than 5' and have no more than one 90° bend.**
(Best Practice is to use the shortest amount of hose with the fewest number of bends.)
4. Loosen the air filter housing and rotate so that the air filter housing inlet is facing the direction the hose will be coming from.
5. Using the Universal Backing Flange as a template mark the location for the Universal Flange Adaptor and cut opening.
6. Mount the Universal Flange Adaptor using the Universal Backing Flange and fasteners provide in the kit (*see diagram*).
7. If necessary, install the proper Metal Expansion Adapter or Rubber Reducing Insert on the inlet of the air filter housing.
8. Measure and cut hose.
9. Mount hose to the Universal Flange adaptor with two opposing hose clamps.
10. Mount hose to air filter housing inlet with two opposing hose clamps.
11. Check hose for possible wear point and correct if necessary.
12. Mount the precleaner to the Universal Flange Adaptor. Use caution to ensure the ejection port on the precleaner is pointed in a safe direction. *(Make sure ejection slot is ejecting away from operator; ejection slot should not face directly forward.)*
13. Remove both old inner and outer air filters from the air filter housing.
14. Thoroughly clean the inside of the air filter housing and cover.
15. If necessary replace or repair the seal on the air filter housing cover.
16. Install new filters. Mark the end cap of each filter with the initials of the installer, the date and machine hours.
17. If the air filter housing or filter housing cover has a Vac Valve (Dump Valve) remove the valve and plug opening using a DVP plug.

Universal Mounting Kit for the Series 9000 Precleaner

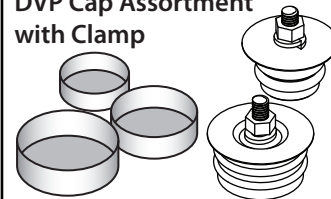
Precleaner mounts to tall side of Flange

Universal Flange Adapter

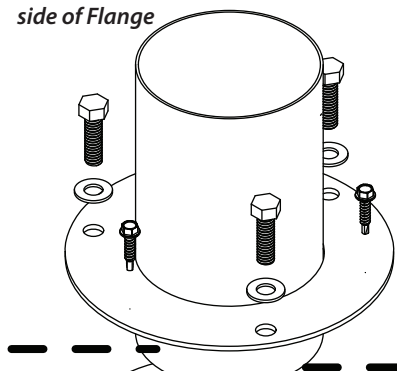
Mount in opening cut in hood deck. Secure to Universal Backing Flange with bolts, washers, and nuts. (Precleaner must be mounted to tall side of flange, which ensures minimum hood clearance between base of precleaner and hood deck.)

NOTE: 3 and 4-inch kits include self-drilling screws in case there is not clearance under hood to be able to secure nuts and washers.

DVP Plugs OR
DVP Cap Assortment
with Clamp



See reverse for list of specific parts included



Hood Deck

Universal Backing Flange

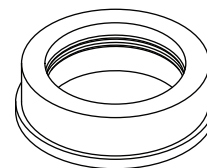
Flex Hose with Hose Clamps

Secure one end to Universal Backing Flange and the other end to Air Filter Housing Inlet. **Best practice** is to use shortest amount of hose with fewest possible bends and no more than ONE 90° bend! Air filter housing inlet should be rotated towards direction hose is coming from.

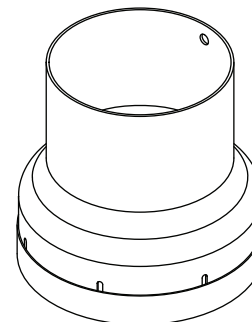
Use two opposing hose clamps

Attach to Air Filter Housing Inlet using two opposing hose clamps.

Adaptation Parts for Air Filter Housing Inlet:



If Inlet is 1-inch smaller than Flex Hose, use rubber reducing insert.



NOTE: Metal Expansion Adapter is not included in 3-inch or 8-inch kit, but can be ordered from Dealer or Sy-Klone.

If Inlet is 1-inch larger than Flex Hose, use Metal Expansion Adapter.

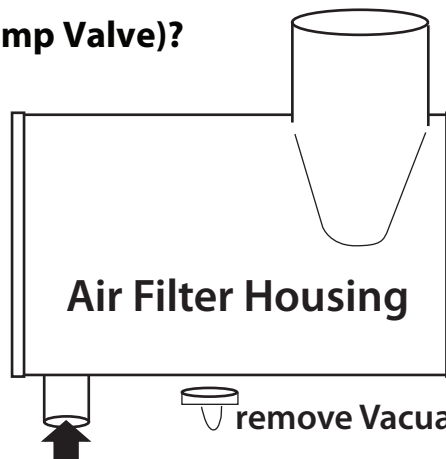
Does the air filter housing have a Vacuator Valve (Dump Valve)?

To get peak efficiency and longer filter life, you must:

- Remove the rubber vacuator valve (dump valve).
- Clean the inside of the vacuator tube.
- Seal the vacuator port opening with Plug OR Cap:
Seal with DVP Plug (Dump Valve Port Plug):
Insert appropriate DVP plug (Dump Valve Port Plug) and securely tighten the lock-nut.

Seal with DVP Cap:

Cover end of vacuator tube with cap and tighten clamp.



Air Filter Housing

remove Vacuator Valve

DVP Plug or DVP Cap with Clamp