

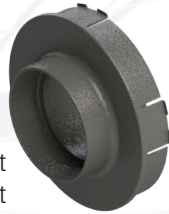
Eight FFX2 Configurations

All service parts are shown below. Check your configuration to see which parts are used.

Straight Outlet, Base Mount, Louvered Filter

Straight Outlet

FFX2951 - 3-inch Straight Outlet
FFX2952 - 4-inch Straight Outlet



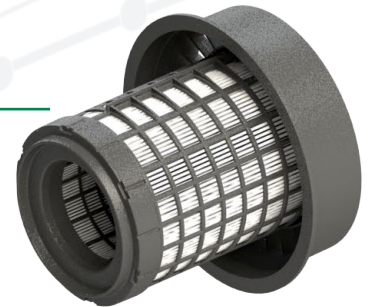
Inlet Cover

FFX2955
(Required for any system using Louvered Filter)



Base-Mount Filter Housing

FFX2957



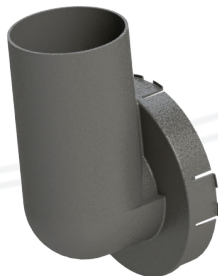
Standard-Length Louvered Filter Options:

FEFF220 - MERV 16
FEFF222 - HEPA*
FEFF242 - EPA*
**ISO 23875-compliant*

90° Outlet, Flange Mount, Closed Filter

90° Outlet

FFX2953 - 3-inch Elbow Outlet
FFX2954 - 4-inch Elbow Outlet



Flange-Mount Filter Housing

FFX2956



Standard-Length Closed Filter Options:

FEFF210 - HEPA*
FEFF211 - MERV 16
FEFF243 - EPA*
**ISO 23875-compliant*