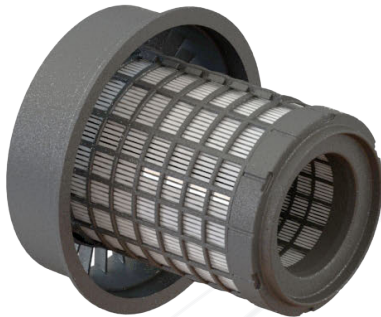


All service parts are shown below. Check your configuration to see which parts are required.

Base Mount, Louvered Filter



Standard-Length Louvered Filter Options:

FEFF222 - HEPA*
FEFF242 - EPA*
**ISO 23875-compliant*

Base-Mount Filter Housing FFX2957 - Footed Housing



Voltage Step-Down Converter*

PFX0901 - From 12V to 6V Converter
PFX0902 - From 24V to 12V Converter

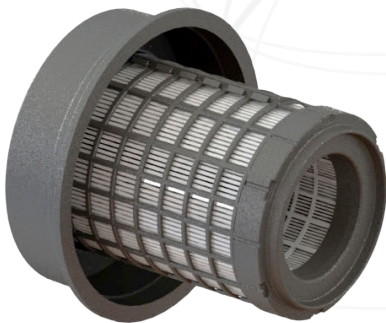
Used to lower sound level. Be sure to use version that converts **from the voltage of your RESPA PFX.*

Motor Assembly

PFX0903 - 12V Motor Assembly
PFX0904 - 24V Motor Assembly



Flange Mount, Closed Filter



Standard-Length Closed Filter Options:

FEFF210 - HEPA*
FEFF243 - EPA*
**ISO 23875-compliant*

Flange-Mount Filter Housing FFX2956 - Flanged Housing



Voltage Step-Down Converter*

PFX0901 - From 12V to 6V Converter
PFX0902 - From 24V to 12V Converter

Used to lower sound level. Be sure to use version that converts **from the voltage of your RESPA PFX.*

Motor Assembly

PFX0903 - 12V Motor Assembly
PFX0904 - 24V Motor Assembly

